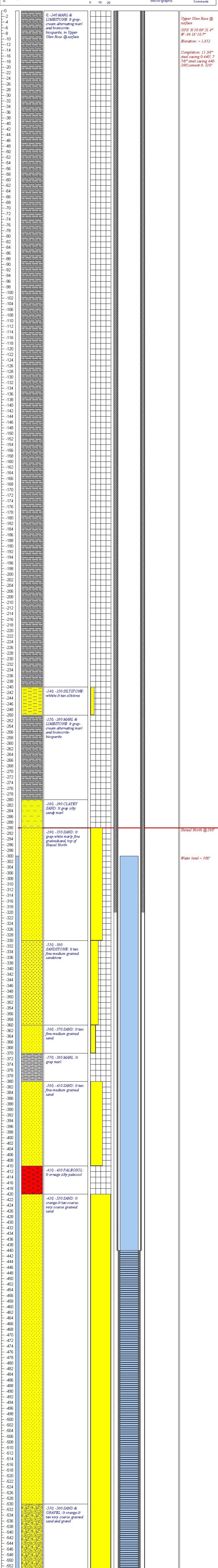




Well *Warren No. 1*
 Location *No. 1 Ed Warren, Hwy 27, Kerr Co., Texas, North of Ingram*
 Geologist *William Feathergill Wilson, PG # 21*
 Driller *Edmund's Drilling (Clovis Riley)*
 Rig Type *Air Rotay*
 Total Depth *560'*

Depth	Water	Lithology	Description	Effective Porosity			Well Construction	Micro-graphs	Comments
				0	10	20			



0 - 240 **MARL & LIMESTONE**: It gray-cream alternating marl and biomicrite-biosparite, in Upper Glen Rose @ surface

-240 - 250 **SILTSTONE**: white-It tan siltstone

-250 - 280 **MARL & LIMESTONE**: It gray-cream alternating marl and biomicrite-biosparite

-280 - 290 **CLAYEY SAND**: It gray silty sand; marl

-290 - 330 **SAND**: It gray-white marly fine-grained sand, top of Hensel North

-330 - 360 **SANDSTONE**: It tan fine-medium grained sandstone

-360 - 370 **SAND**: It tan fine-medium grained sand

-370 - 380 **MARL**: It gray marl

-380 - 410 **SAND**: It tan fine-medium grained sand

-410 - 420 **PALEOSOL**: It orange silty paleosol

-420 - 530 **SAND**: It orange-It tan coarse-very coarse grained sand

-530 - 560 **SAND & GRAVEL**: It orange-It tan very coarse grained sand and gravel

Upper Glen Rose @ surface
 GPS: N 30 06' 51.4"
 W -99 18' 10.7"
 Elevation: ~ 1,832

Completion: 11 5/8" steel casing 0-440', 7 7/8" steel casing 440-560'; cement 0-320'

Hensel North @ 290'

Water level ~ 300'