

Strata Geological Services

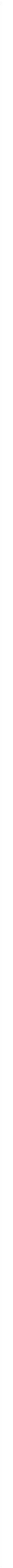
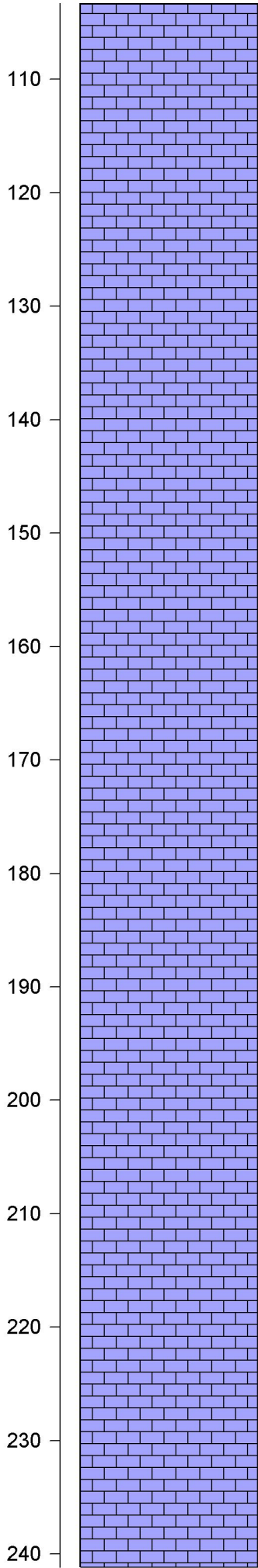
Geologist: Wm Feathergail Wilson PG 21

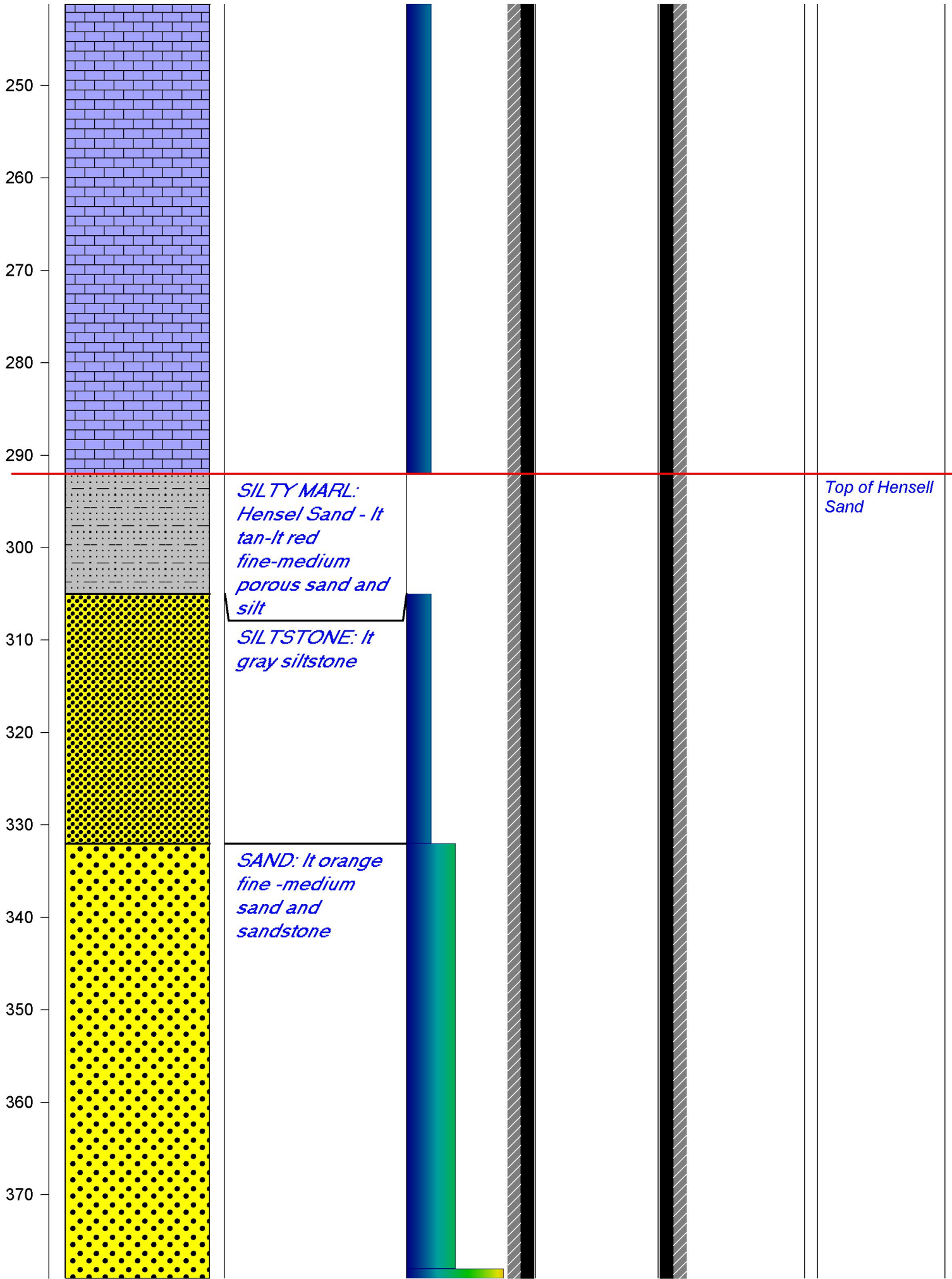
Strata Geological Services

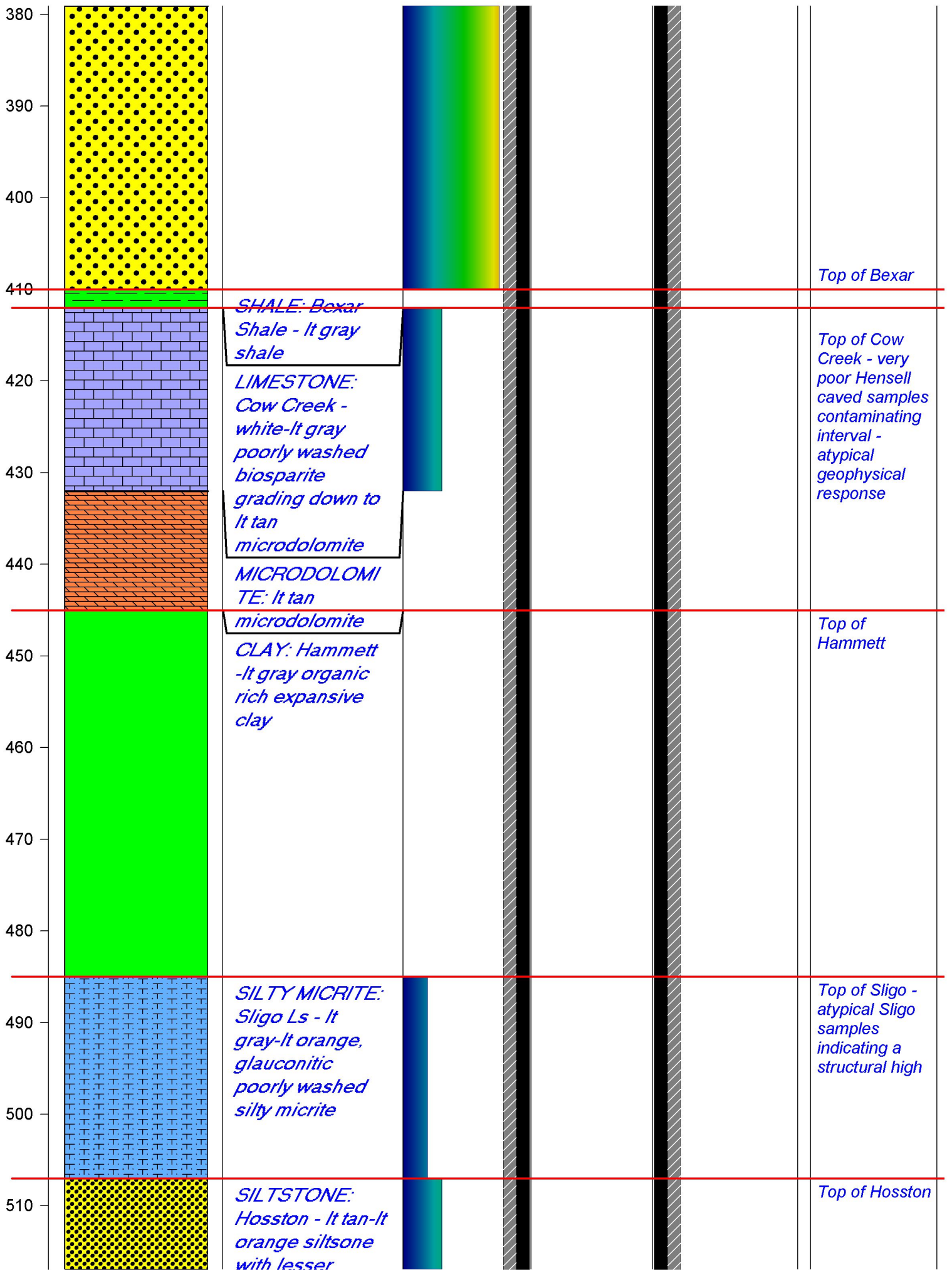


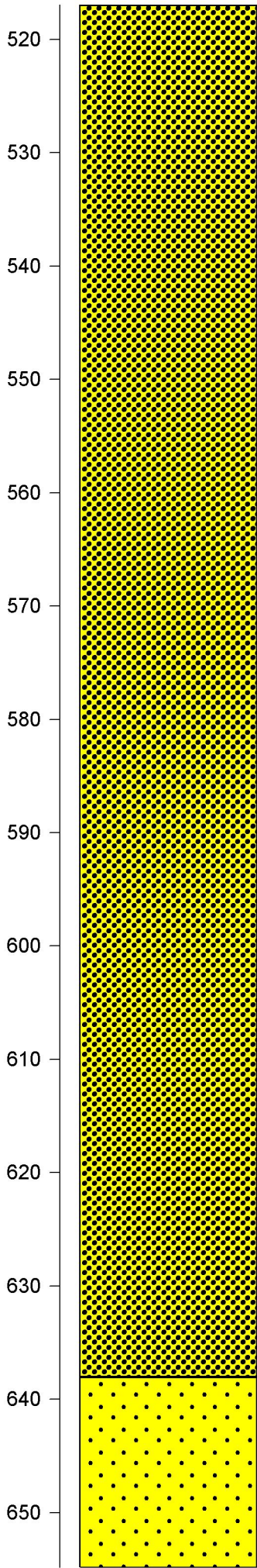
Headwaters MW-18
 Total Depth 1615'
 Lat 29.961133
 Long -99.155583
 Elevation 1,632'
 Completed 04-10-2018

Depth	Lithology	Description	% Porosity	Construction	Microphoto	Comment
0		<i>SAND & GRAVEL: Quaternary alluvium</i>				Stream Quaternary Alluvium
10		<i>LIMESTONE & MARL INTERBEDS: Upper Glen Rose - It gray to It tan biomicrite and marl interbeds</i>				Top of Upper Glen Rose Mbr
30		<i>LIMESTONE: Lower Glen Rose Mbr - It gray biomicrite and biosparite with lesser amounts of microdolomite with traces of sub-bituminous coal and anhydrite</i>				Top of Lower Glen Rose Mbr
50		<i>LIMESTONE: Lower Glen Rose Mbr - It gray biomicrite and biosparite with lesser amounts of microdolomite with traces of sub-bituminous coal and anhydrite</i>				17.5" hole to 845' - set 12" steel casing to 845'
60		<i>LIMESTONE: Lower Glen Rose Mbr - It gray biomicrite and biosparite with lesser amounts of microdolomite with traces of sub-bituminous coal and anhydrite</i>				
70		<i>LIMESTONE: Lower Glen Rose Mbr - It gray biomicrite and biosparite with lesser amounts of microdolomite with traces of sub-bituminous coal and anhydrite</i>				
80		<i>LIMESTONE: Lower Glen Rose Mbr - It gray biomicrite and biosparite with lesser amounts of microdolomite with traces of sub-bituminous coal and anhydrite</i>				
90		<i>LIMESTONE: Lower Glen Rose Mbr - It gray biomicrite and biosparite with lesser amounts of microdolomite with traces of sub-bituminous coal and anhydrite</i>				
100		<i>LIMESTONE: Lower Glen Rose Mbr - It gray biomicrite and biosparite with lesser amounts of microdolomite with traces of sub-bituminous coal and anhydrite</i>				



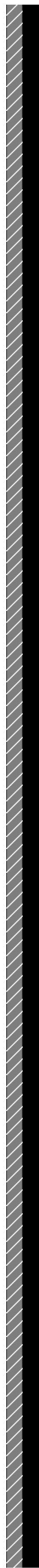
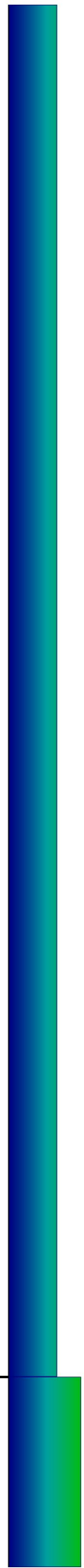




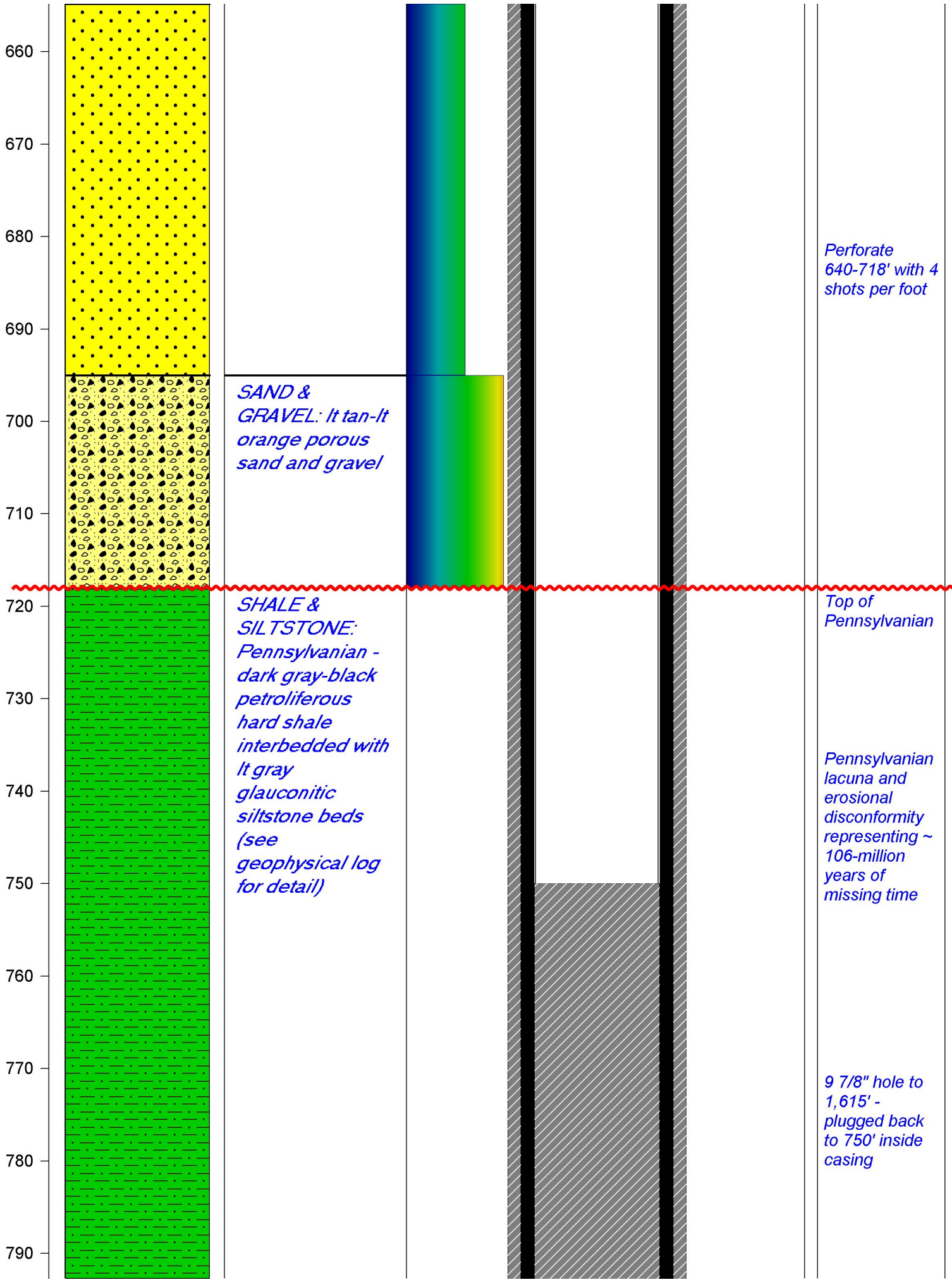


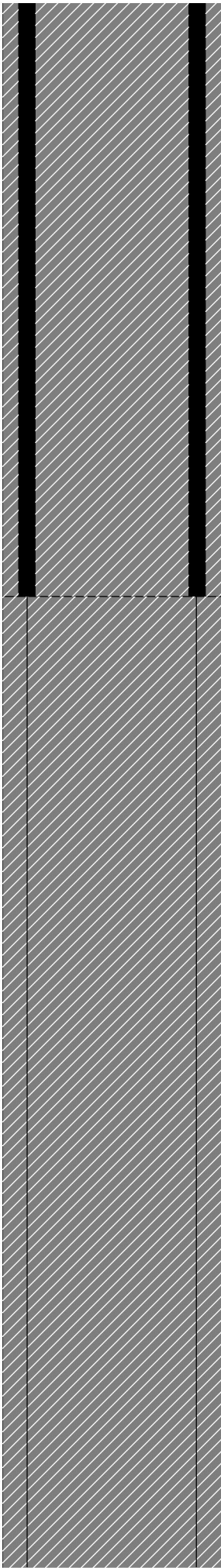
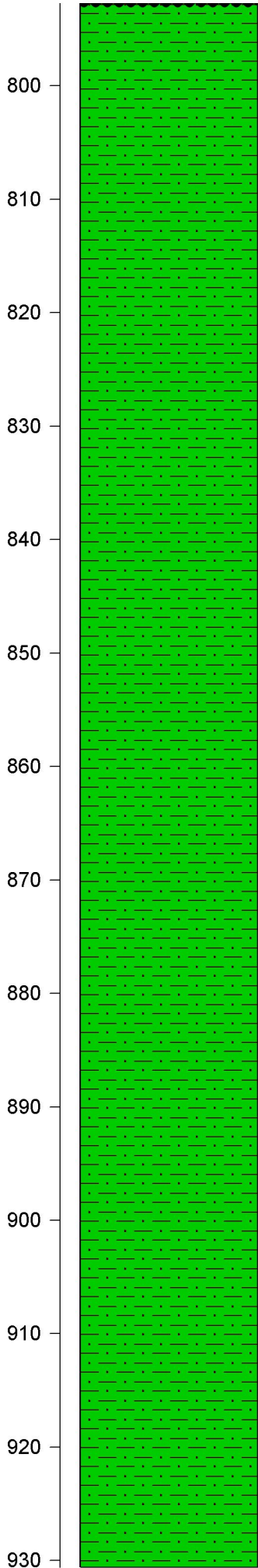
amounts of sandstone

SANDSTONE: It tan-It orange porous sand and sandstone

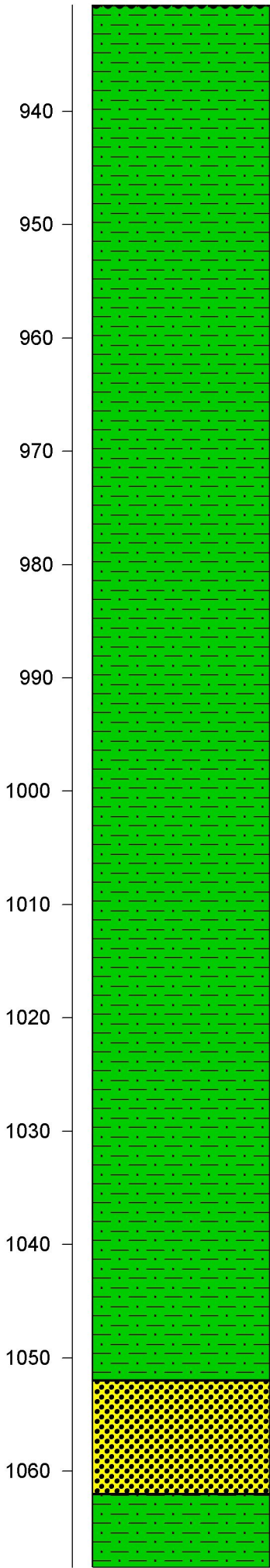


Atypical siltstone thickness indicating a structural high with numerous paleosol intervals



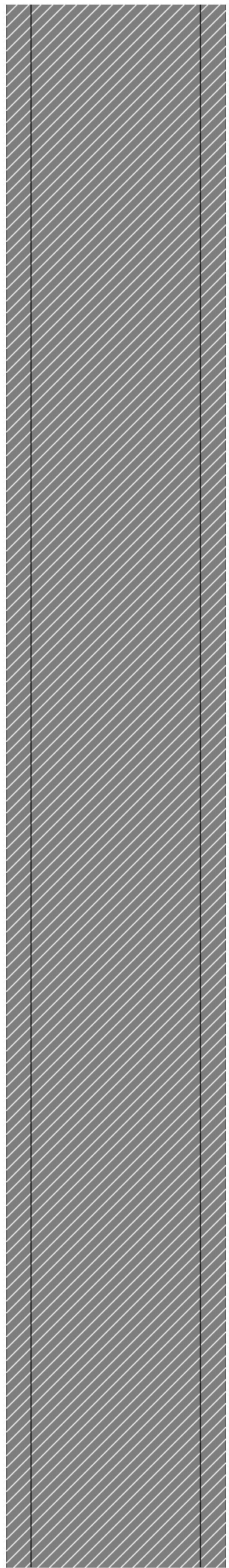


Trace cgl

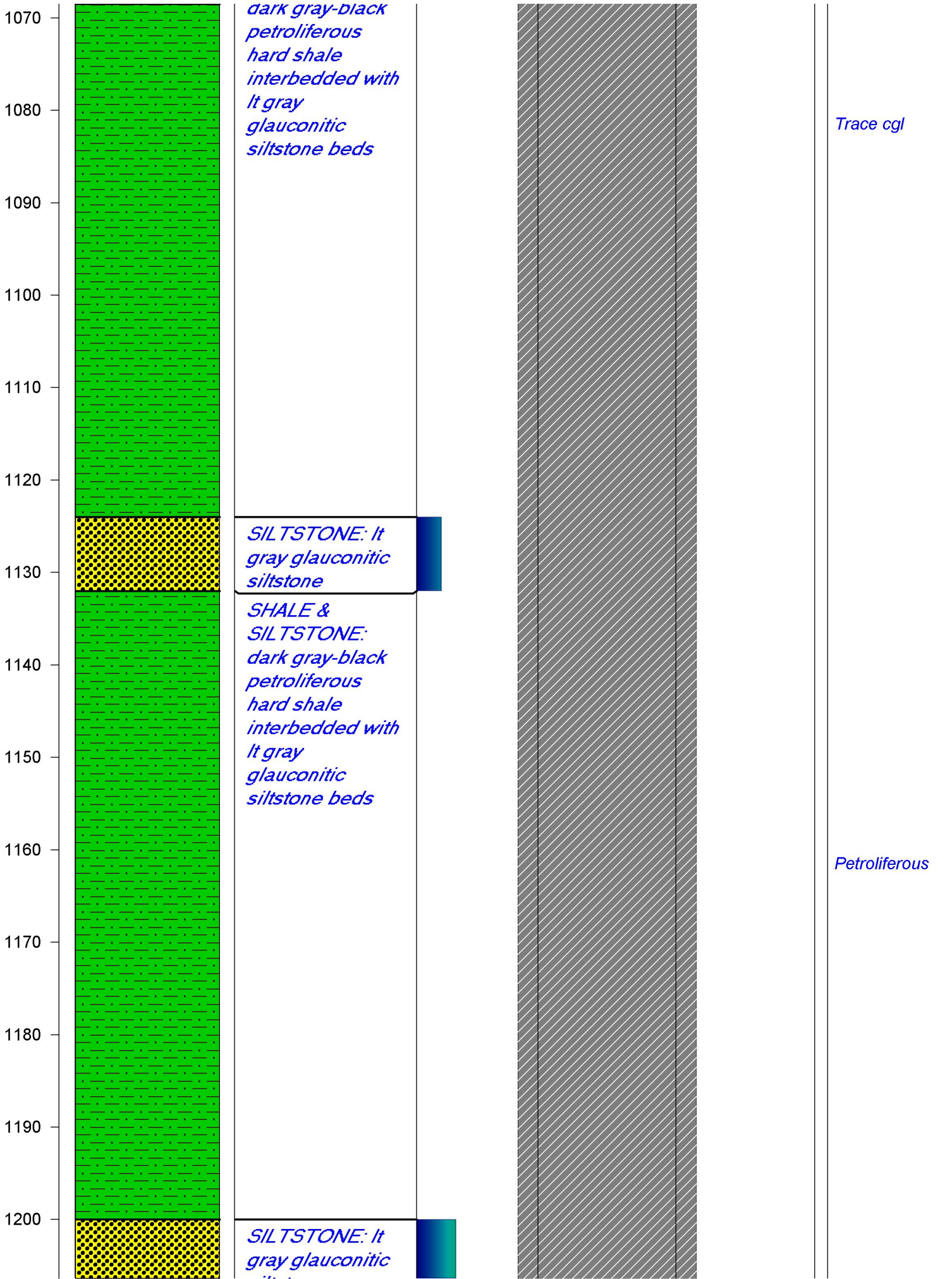


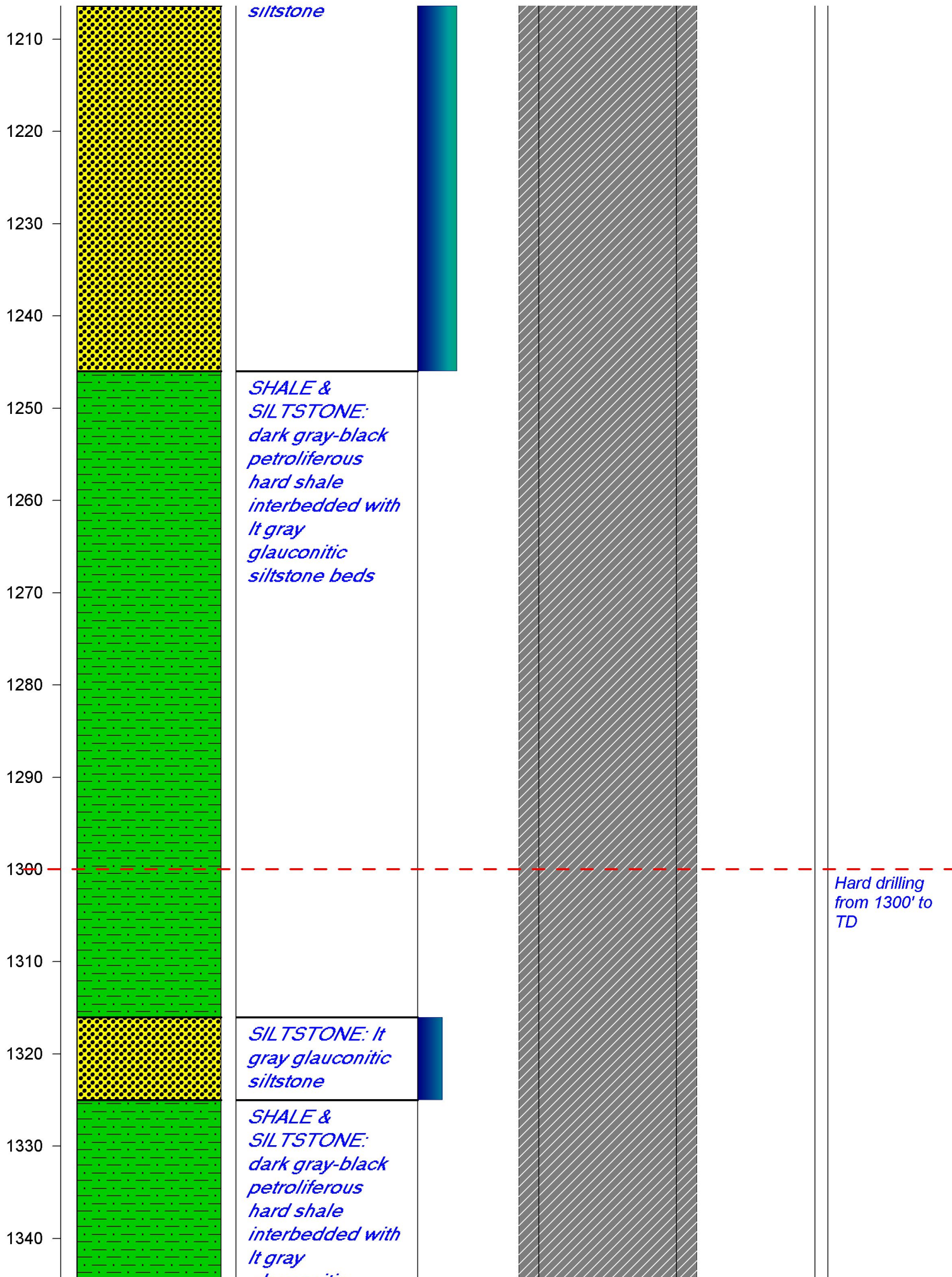
*SILTSTONE: It
gray glauconitic
siltstone*

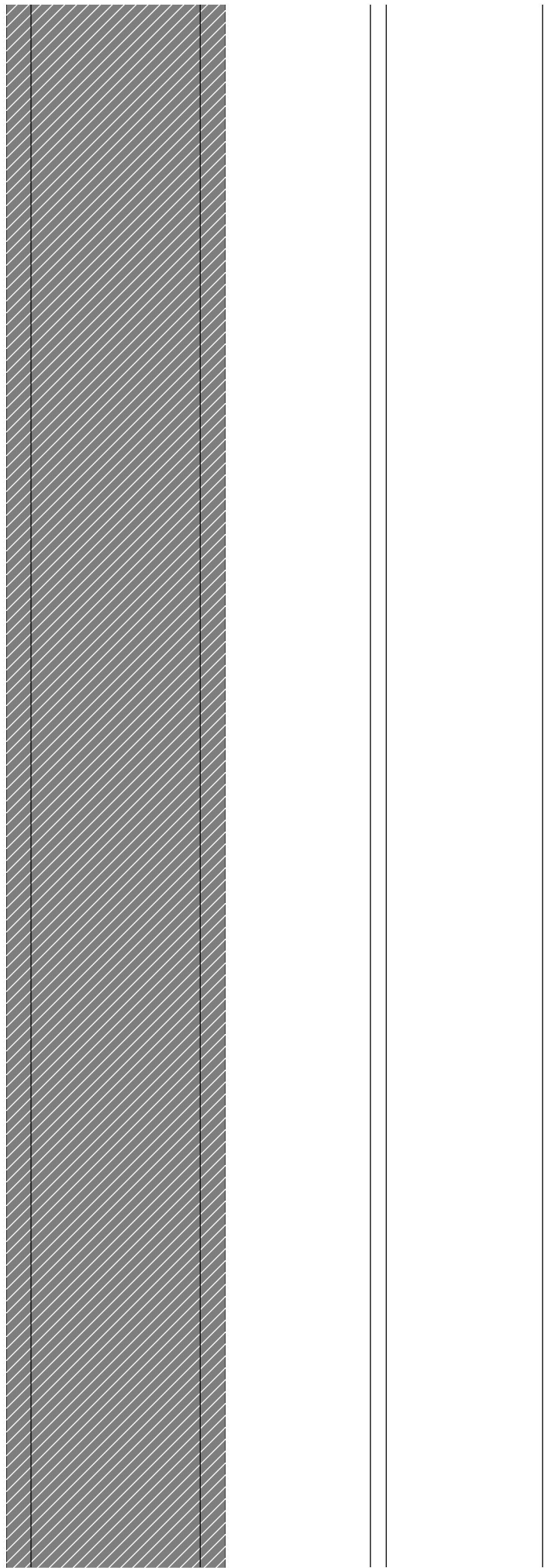
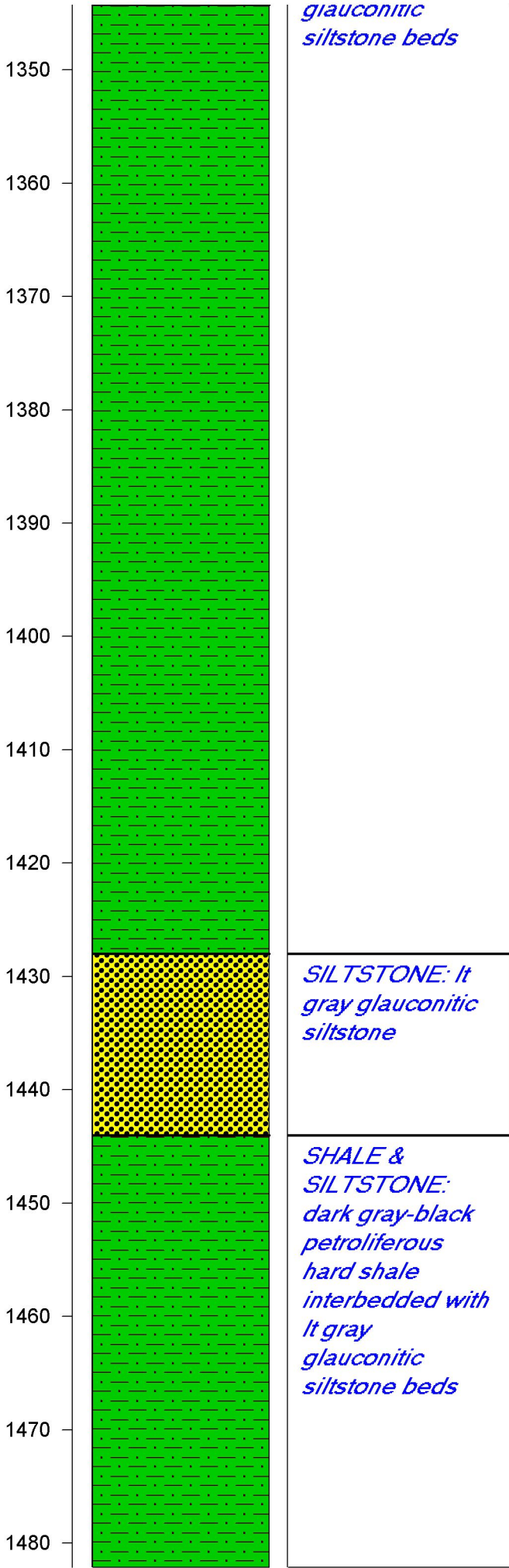
*SHALE &
SILTSTONE:*

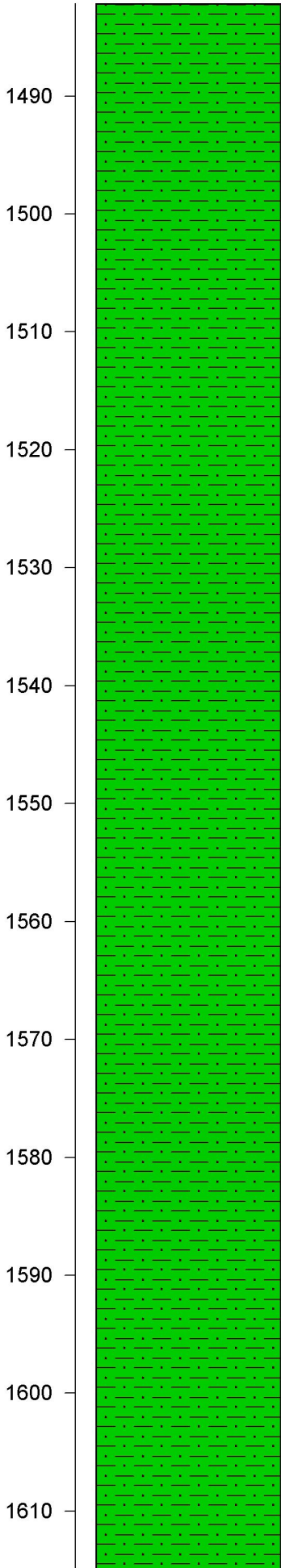


Petroliferous









1490

1500

1510

1520

1530

1540

1550

1560

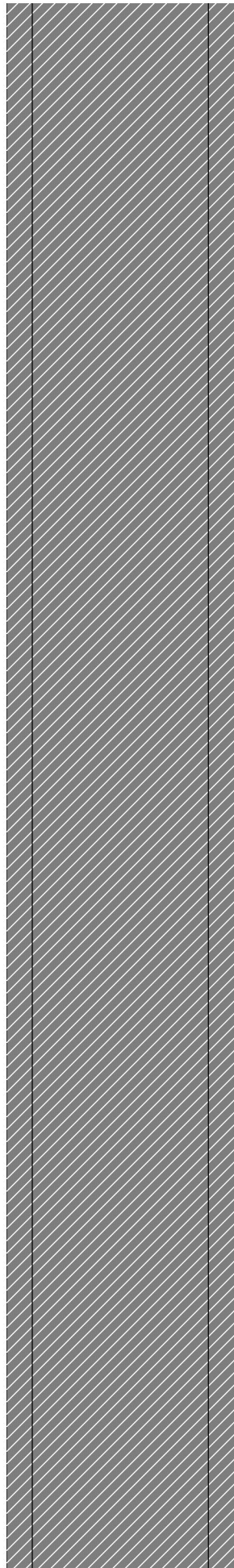
1570

1580

1590

1600

1610



Volcanic ash